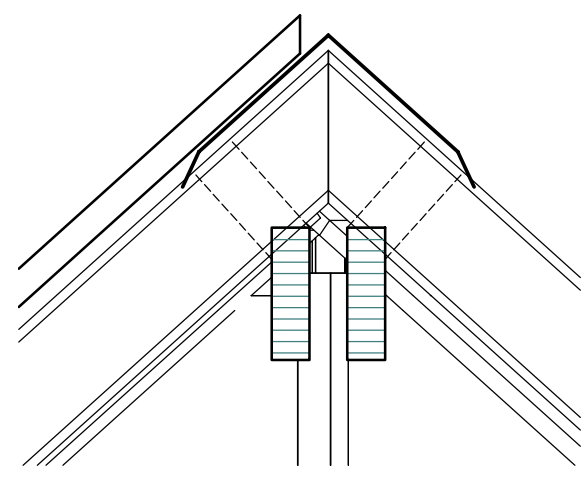
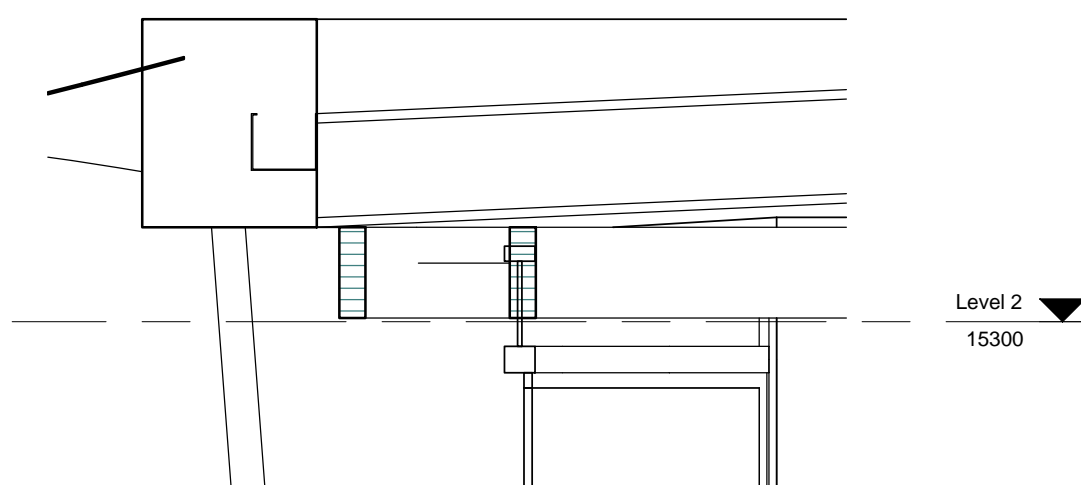
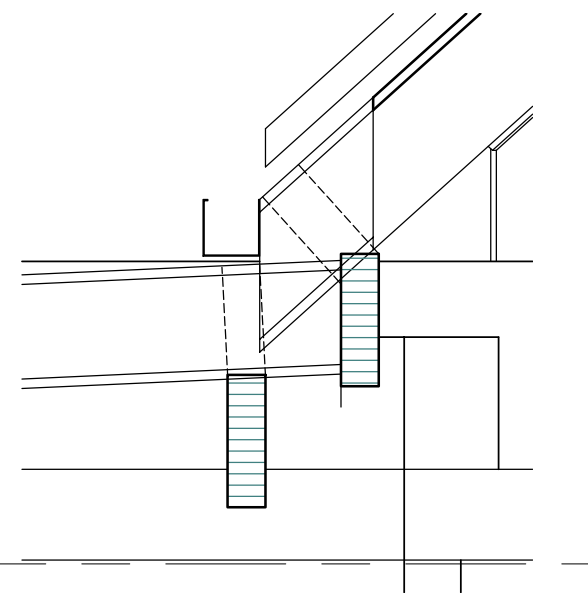
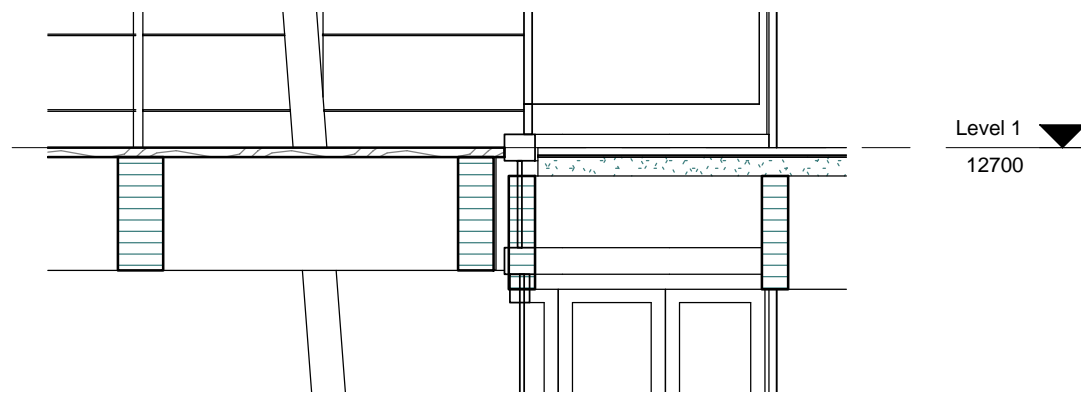
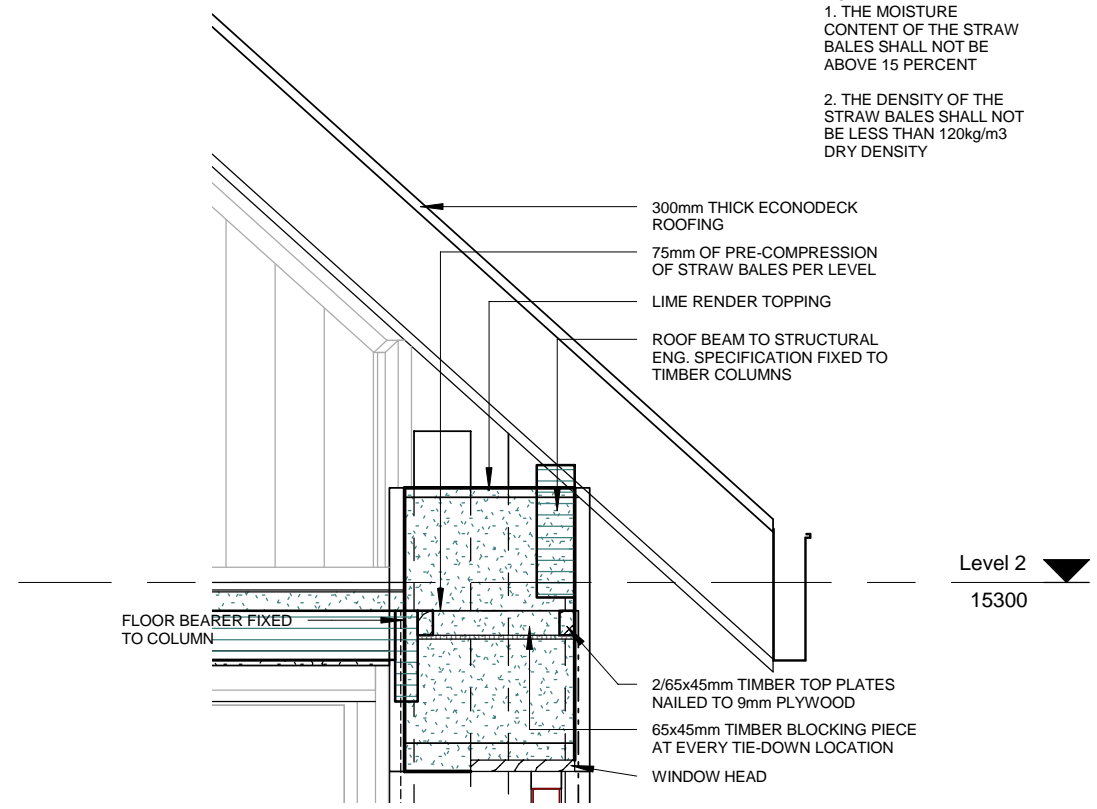


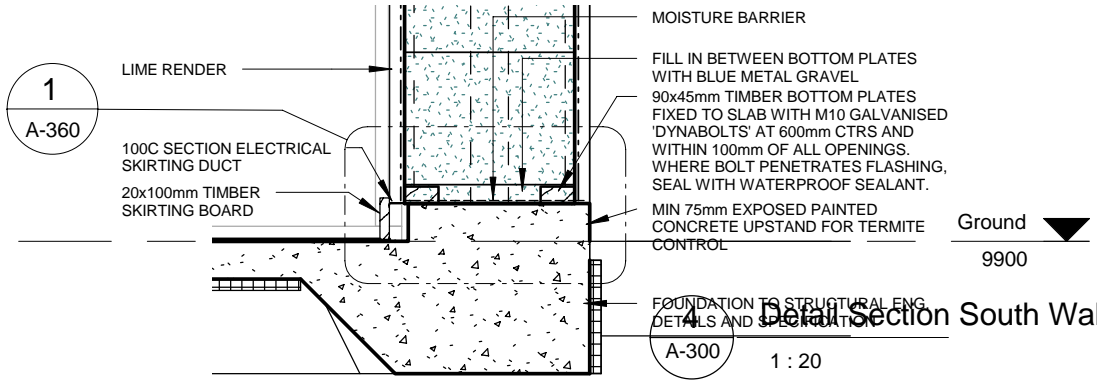
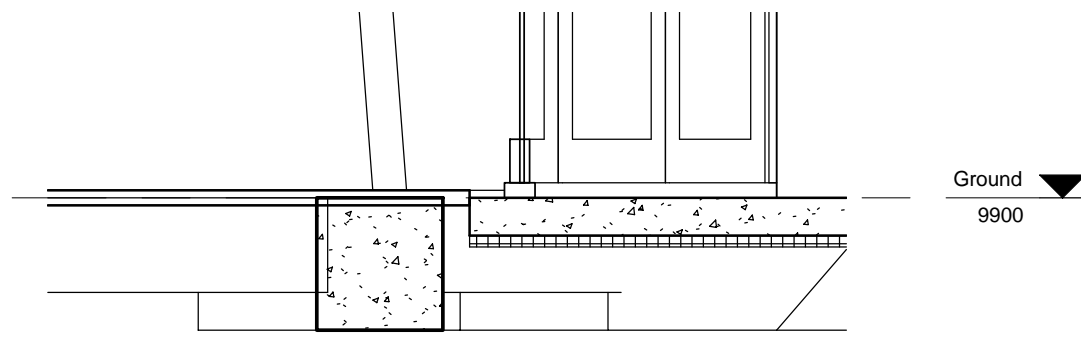
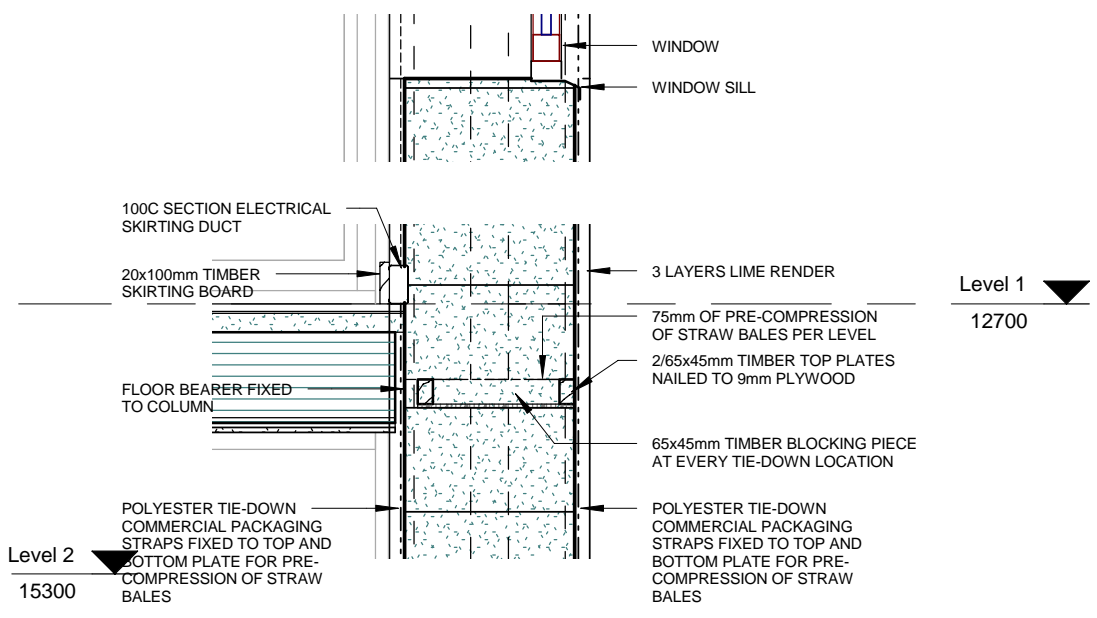
NOTE:
 1. THE MOISTURE CONTENT OF THE STRAW BALES SHALL NOT BE ABOVE 15 PERCENT
 2. THE DENSITY OF THE STRAW BALES SHALL NOT BE LESS THAN 120kg/m³ DRY DENSITY



2 Ridge detail
 A-300 1:20



3 Roof Junction Detail
 A-300 1:20



1 Detail Section North Wall
 A-300 1:20

4 Detail Section South Wall
 A-300 1:20

CD-W

CHRISTIAN WETJEN
 3/26 SCARBOROUGH BEACH ROAD
 SCARBOROUGH, WA 6019
 0439461691
 CHRISTIAN.WETJEN@COX.COM.AU

234A HANCOCK STREET
 DOUBLEVIEW

DETAIL SECTIONS 1 A-350
 FEBRUARY 2009 SCALE 1:20

08.03.2009 23:59:12